

# Micklem School

## PTA

# NEWS

ISSUE 10

Although it has only been a short half term we still managed to squeeze in a couple of events, including Magic Martin!

Thank you to all of those who donated items for our Summer Fayre Tombola, it is much appreciated.

The next big PTA project is to transform the pond area into a sensory garden. This is going to take some work, so if you or anyone you know has the skills, equipment etc. to help complete this please let the school office know.

Please be reminded that the Shorts & Shades Disco, Marvellous Men Gift Sale and Summer Fayre events are all still available to purchase through Arbor-School Shop.

Thank you to all of our amazing parents/carers for your continued support with raising money for the PTA.

Have a lovely Half Term!

## FUNDRAISING UPDATE

A massive thank you to everyone. Here are the latest figures:

- Magic Martin - £218.45
- Easyfundraising - £91.86

## Magic Martin!!

On Thursday we welcomed Magic Martin to Micklem School to perform a comedy magic show to the children.

Everyone seemed to really enjoy the show and some lucky children even got the chance to be Magic Martin's assistant, including birthday girl Isla who was given her own special entrance music onto the stage!



## UPCOMING EVENTS

13<sup>th</sup> June – Marvellous Men Gift Sales

26<sup>th</sup> June – Shorts and Shades Disco

5<sup>th</sup> July – Summer Fayre

[parentkind.org.uk](http://parentkind.org.uk)

is brimming with articles for parents, to help you support your child's school life and learning, and it's open to everyone!

## We Need Your Help!

We are still looking for volunteers to help run a stall during the Summer Fayre which is taking place on Saturday 5<sup>th</sup> July, 11am – 2pm. If you are able to offer your time then please contact the school office.



[pta@micklem.herts.sch.uk](mailto:pta@micklem.herts.sch.uk)



Facebook page: Micklem Primary School PTA



Susan Willington & Jo Moriarty  
01442 408964

### Donations

If you wish to make a monetary donation to the PTA then you can do so by going onto Arbor – School Shop – PTA Donation and then select the amount that you wish to donate.

**Parentkind**  
Member Association

# 2025 MICKLEM SENSORY GARDEN REFURBISHMENT



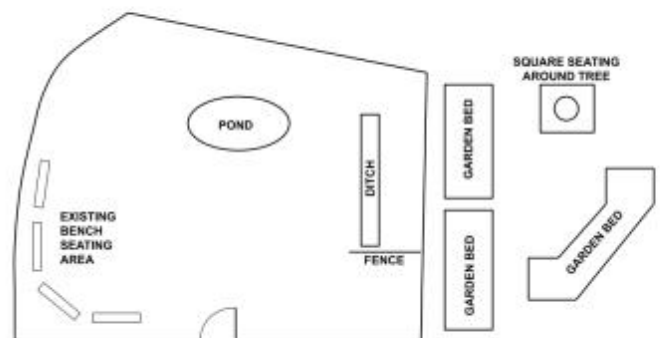
## SENSORY GARDEN LOCATION



## SENSORY GARDEN SITE PLAN



Sensory Garden Plan  
Not to Scale



## PROPOSED TASKS - Phase 1: Clearing



### General Clearing

Of all growth, weeds etc throughout garden. Strip it back to a blank canvas.

### Pond

Drain pond (approx 1.5ft depth). Likely requires external company & completion prior to volunteer day.

Jackhammer concrete to allow for drainage and fill in/level for future usage.

Sensitivity to potential wildlife issues.

### Ditch

Remove all weeds/growth and fill in/level for future usage.

Possibly remove adjacent internal fence.

### Fencing

Repaint fence.

### Garden Beds & Surrounds

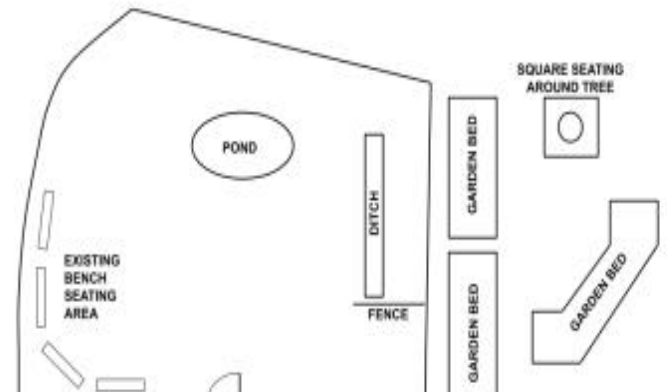
Clear all growth both inside and surrounding garden beds, ready for future planting.

### Square Seating around Tree

Clear all growth, determine if repairs required, repaint.

### Levelling Ground

Sensory Garden Plan  
Not to Scale



## PROPOSED TASKS - Phase 2: New Additions



### Outdoor Classroom/Canopy

Long term goal of a new outdoor classroom, with waterproof canvas roof/roll down sides.

### Pathways

Addition of new pathways - i.e. paving stones, stones, gravel, design and location TBC.

### Sensory Gardens - Design and Implementation TBC

Identify preferred location of sensory gardens - i.e. garden borders or within garden beds (Ms Evans to look into). Herb gardens, flowers, veg patches. To determine what is a project for students and what might be achieved with volunteers.

### Sensory Garden Features

Identify possible garden additions and see what could be donated or requires purchase, i.e. welly box, water butt, garden furniture/seating etc and any other constructed features.

### Additional Tasks:

Rubbish Removal/Disposal - possible council involvement, use some to fill in pond and ditch areas.

Source/purchase compost to fill in pond & ditch.

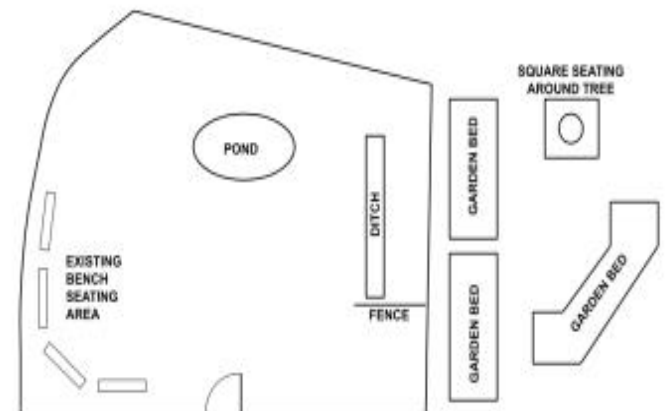
### Donations Requested

Donations toward any of the following would be much appreciated:

### Bulbs, Seeds & Plants

Other items TBC

Sensory Garden Plan  
Not to Scale



# PROPOSED TASKS



## General Clearing



Weed and cut back all growth from inside the fenced area, as well as along the exterior fence line.

## Pond



Drain pond (probable exterior company task). Once drained, concrete requires jackhammering to allow rainwater drainage. Fill in with compost and level.

## Ditch



Ditch runs for several meters where the tall reeds are growing. Cut back entire area and fill in. Possibly remove adjacent fence posts.

## Fencing



Clear all fences and repaint.

## Garden Beds



Cut back all growth to reveal existing garden beds and ascertain their current state. Dig up contents, ready for future planting. Possible repaint.

## Square seating around Tree



Clear seating area and determine state. Repair if required, repaint.

## Levelling Ground



It's currently quite difficult to determine how bumpy the ground is and if it poses a hazard. While we think full scale rotavating is cost prohibitive, if there are any big bumps, it might be helpful to have someone dig them up and rake over or fill in as required.

## Additional Tasks



Determine waste disposal for all plant material (i.e. council, fill in ditches with waste, placement elsewhere on school grounds?). Source compost to fill in relevant areas.

## POTENTIAL NEW ADDITIONS



### Outdoor Classroom/Canopy



To make this a regularly used space, we would love an outdoor classroom with the ability to roll down sides to keep out inclement weather. Cost is likely expensive for something like this.

### Pathways



Design TBC but addition of pathways would be another long term goal.

### Sensory Garden Design



Design and layout of sensory garden with Ms Evans and input from others. (Image is taken from web and is not reflective of current plans.)

### Garden Features



Are there any features that could be constructed by parents?